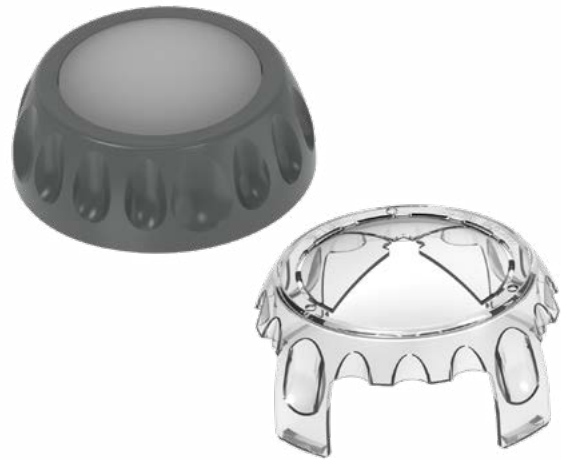


INTRODUCING LUMAWISE MOTION SENSOR

- Interoperability from the Zhaga-D4i logo and certification
- Detected motion will cause a dimmed luminaire to brighten allowing for energy savings while still having the safety and security of a well-lit area



TE Connectivity (TE)'s LUMAWISE Motion Sensor is designed for street lighting. Enabling energy savings from dimming or even turning off a luminaire, while still being able to react to motion and bring a luminaire to full brightness for safety and security reasons.

LUMAWISE Motion Sensor will fit into the Zhaga-D4i ecosystem, which is the new standard for smart cities. Working as a standalone control device or in combination with Zhaga-D4i photocell or communication node for greater levels of control. The sensor is a pluggable device, with the standard Zhaga book 18 interface for an easy upgrade.

APPLICATIONS

- Street lighting
- Park, recreational and walkway lighting
- Station lighting
- High bay lighting

TARGET MARKETS

- OEM's
- Utility companies
- Municipalities

KEY BENEFITS

- Interoperability from the Zhaga-D4i logo and certification
- Detected motion will cause a dimmed luminaire to brighten allowing for energy savings while still having the safety and security of a well-lit area
- Compact design to keep the aesthetics of modern designed luminaires
- One handed, easy under luminaire connection allows for an installer to work below the luminaire

LEARN MORE

- [LUMAWISE Motion Sensor Flyer](#)
- [LUMAWISE Motion Sensor PGP](#)
- [LUMAWISE Motion Sensor Video](#)
- [Street Lighting Controls](#)
- [LUMAWISE Motion Customer Presentation](#)
- [LUMAWISE Motion Sensor - Product Video](#)
- [Street & Area Lighting Solutions](#)
- [Outdoor Lighting Solutions](#)